

GB_SENSO CLIC INSTALLATION INSTRUCTIONS

1 – FLOOR PREPARATION

THIS FLOOR COVERING MUST BE INSTALLED ON A FLOOR THAT IS FLAT*, HARD, DRY (with no rising damp), CLEAN, SMOOTH AND DUST-FREE.

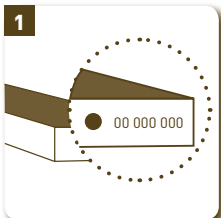
[*] Flat floor = Floor level must be maximum 5 mm under the 2 metre rule. The floor must not have unevenness **above 1 mm every 20 cm**.

It is highly recommended that the floor covering be affixed to the subfloor using high-performance acrylic glue in the following situations: installation close to picture

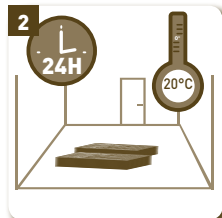
windows or skylights (increased temperature variation). If the floor covering must be installed over underfloor heating, turn the heat off 24 hours prior to installation. Any unevenness greater than 1 mm in depth should be concealed using a patching or a levelling compound. In the event of localized unevenness of 1 mm in depth, simply glue the snapping connections during assembly. For any additional technical information, please consult a specialist.

Type of Floor	Floor Preparation
Concrete floor, poured topping	If necessary, use a levelling coat to remove any surface irregularities. Grind, remove dust.
Carpeted floor, laminated parquet PVC flooring with folds, missing or damaged PVC tiles	Remove old floor covering and underlay, scrub any remnants thereof until the floor is clean and dry. If necessary, apply a levelling coat to eliminate any remaining irregularities. Grind, remove dust.
Wood strip flooring and wood-based panels	Stabilize loose planks. To achieve a totally smooth floor, use a fibrous patching compound, or install a particleboard panel liner over the entire surface. Tongued/grooved panels on the side will be glued and affixed using screws every 15 to 30 cm as appropriate. Use stainless steel (or similar) screws, the length of which is 2.5 times the thickness of the panels themselves. Plug grout with a specific caulk, sand, remove dust.
Tiles	If necessary, fix any loose tiles. Clean and remove dust. Remove any traces of paint, plaster, grease, etc. Apply a levelling coat to eliminate grout that is greater than 4 mm in width and/or 1 mm in depth. Grind, remove dust. In the event of localized unevenness of 1 mm between 2 tiles or tile rows, glue the snapping connections of the planks during assembly.

2 – HOW TO INSTALL SENSO CLIC ?



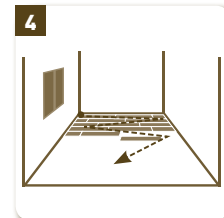
Check that all the planks have the same batch number.



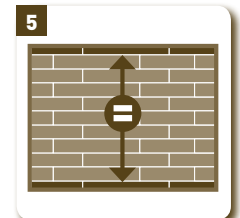
Unwrap planks and stack them flat, decorative side up, 24 hours prior to installation and at roughly 20°C.



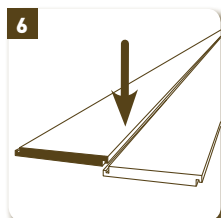
Equip yourself with a ruler, knife, cut-resistant gloves, tape measure, rubber mallet (do not use a metal hammer).



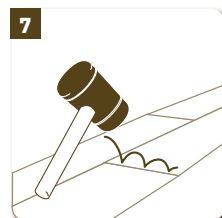
Start in a corner of the room.



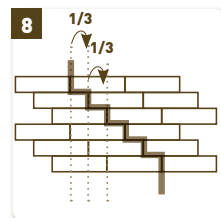
With the visible tongue always turned towards you, lay each row of flooring while moving backwards. The last row of planks should be the same width as the first row of planks.



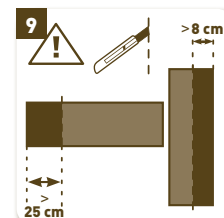
Match up the tongue with the groove.



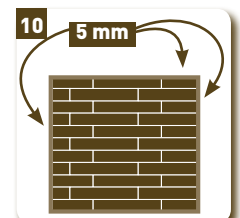
Hammer the planks together, beginning with the small side. Hammer taps must be close to one another to ensure that planks are firmly locked together.



Offset each row by a third of a plank's length.



The strip at the edge of each row should not be less than 25 cm in length and 8 cm in width.



Allow a 5 mm expansion gap between the planks and the walls.

Made in France

Gerflor sa - Z.I. du bois des lots
26130 Saint-Paul-Trois-Châteaux
FRANCE

www.gerflor.com

IMPORTANT:

- > **THIS FLOORING IS FOR RESIDENTIAL USE ONLY AND MUST BE INSTALLED AT ROOM TEMPERATURE BETWEEN 15 and 28°C; 20°C IDEALLY.**
- > **THIS FLOORING SHOULD NOT BE USED FOR THE FOLLOWING: conservatories, rooms in which temperatures can dip below 15°C.**
- > **This flooring is compatible with underfloor heating and cooling systems provided that the heated floor temperature does never exceed 28°C. Installation on radiant heated floors (RHF) is acceptable if planks are glued.**
- > **Consider saving a few planks from the same batch number for any potential future repairs. Install using a rubber mallet (not a metal hammer).**

TIPS AND ADVICE:

Planks should be installed with their length parallel to the incoming sunlight.

> How to Cut Border Planks

Perform the cut using two planks. Place the first plank (A) on the last fully installed plank. Place the second plank (B) on plank A, making sure that it touches the wall. Use plank B as a ruler to cut plank A. Install the cut plank. This process should be used for each plank that makes up the border.

> Finishing Wet Rooms (Bathrooms, Water Closets, Laundry Rooms)

Apply a polyurethane sealant along the perimeter of the room to ensure a perfect watertight seal.

3 – SENSO CLIC MAINTENANCE

USAGE PRECAUTIONS:

Use plastic or felt protector pads under the feet of furniture items or under other heavy objects. Protect planks from heat sources and possible blasts of heat.

FLOOR WASHING:

Vacuum or wet mop. Regular non-abrasive detergent. Tough stains: diluted liquid bleach, white spirit, ethyl alcohol, or lemon juice. Stubborn Stains (ink, tomato, mustard, blood, beets, and Mercurochrome): let diluted liquid bleach sit for several minutes, without rubbing. Rinse thoroughly. Rust: Clean using a textile rust remover. Rinse thoroughly. Grease, pen, felt pen: Rub lightly with a cloth soaked in white spirit. Rinse thoroughly.

MAINTENANCE PRECAUTIONS:

Do not use acetone or chlorinated solvents (ex. trichloroethene). Never use wax or varnish coating.

PLANK REPLACEMENT:

Cut the plank to be replaced at an angle, remove the plank by pulling from that angle. Replace the old plank with the new one by first placing the tongue under the other planks and then tapping with a rubber mallet.

ADDITIONAL INFORMATION:

The eventual opening of the joint between planks is a natural occurrence and does not require repair.

4 – THE SENSO CLIC WARRANTY

Senso Clic planks are guaranteed against any manufacturing defects from their date of purchase. To make a claim, return to the store or place of purchase with your corresponding receipt. Installation onto underlay is not included in this warranty.

This warranty covers all abnormal degradation of this product, given that Senso Clic planks are only to be used in private, non-professional residential environments and installed and maintained in accordance with the instructions provided.

This warranty covers the replacement of Senso Clic planks determined as defective with equivalent- or similar-quality Senso Clic planks from the product line existing at the time of

the claim; it does not include fees incurred for the removal or installation of Senso Clic planks. This warranty does not cover normal plank wear, any error resulting from improper installation or maintenance, any abusive or abnormal use, any scratching, any fault that can be attributed to the user or to user negligence, namely as a result of impact, falling objects, stains, cigarette burns or other burns, or any damage due to bad weather or fire. Where applicable, this warranty is subject to national legislation concerning warranties that manufacturers of this type of product must provide.

Made in France

Gerflor sa - Z.I. du bois des lots
26130 Saint-Paul-Trois-Châteaux
FRANCE

www.gerflor.com

Gerflor[®]